



RENDERING IS ARTIST'S CONCEPT AND MAY VARY SLIGHTLY FROM THE FINAL PRODUCT. E. \$ O.E.

THE TRENTO

Lot #4 - Unit #7 at 24 Grapeview Drive

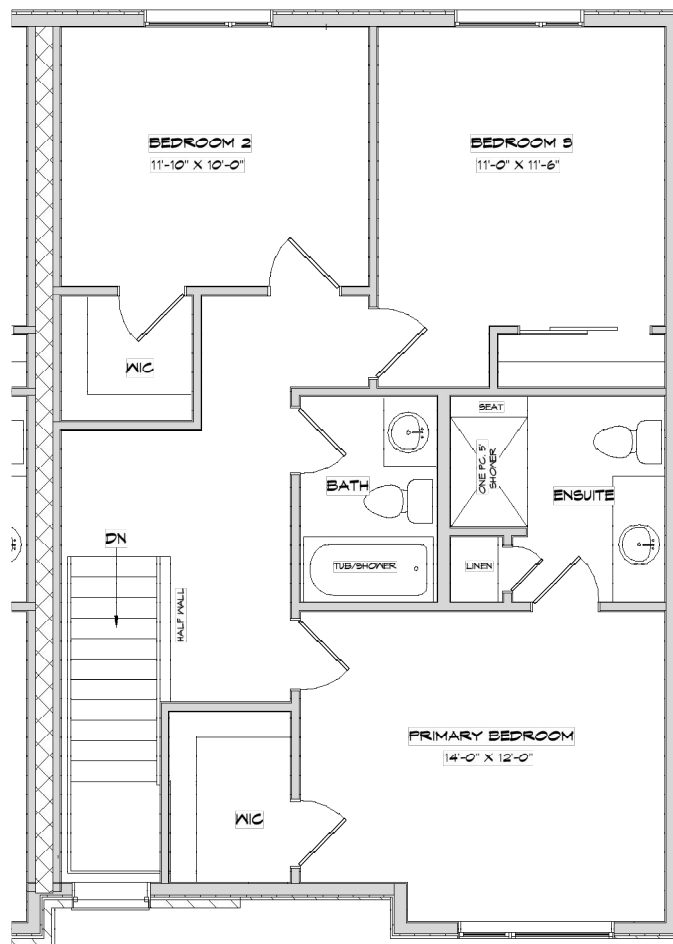
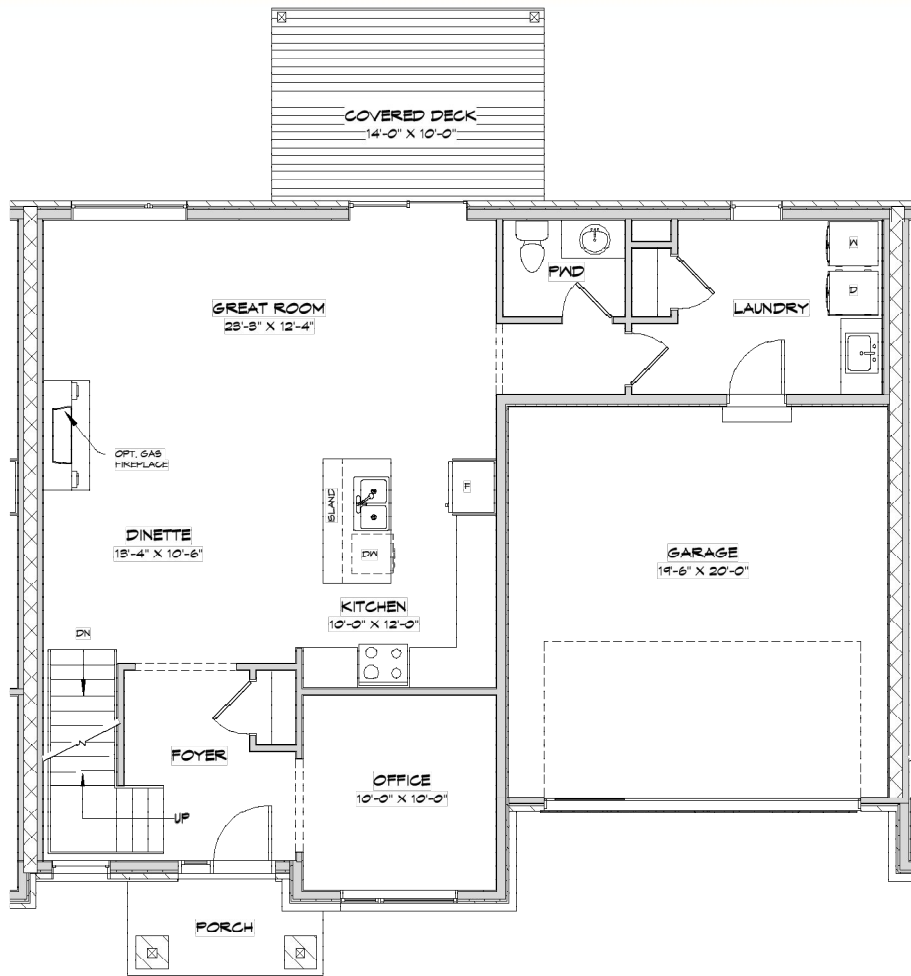
Feature Sheet

	3 BEDROOM(S)
	3 BATHROOM(S)
	DOUBLE CAR GARAGE
	\$1,099,900 *PRICE SUBJECT TO CHANGE

Association Fee: \$215/month (Approx.) Covers summer & winter maintenance (common area watering, lawn services, snow removal and salting fees).

- 1872 sq.ft interior unit
- Brick, cement board, stone & stucco contemporary facade
- Complete landscape package including paved driveway & sprinkler system
- 14' x 10' covered pressure treated deck with glass railings
- Double car garage with direct entry into home
- 9 foot ceilings on the main floor & second floor
- Custom built cabinetry in kitchen and baths
- Quartz countertops in the kitchen, ensuite, bath(s) & laundry
- Hardwood in great room, kitchen, dinette and den
- Linear Gas Fireplace with contemporary tiled surround in great room

- Gas line to BBQ
- Upgraded tiled shower in the ensuite
- Led potlights on main floor and second floor
- Upgraded lighting through-out
- Undercabinet lighting in kitchen.
- Over sized procelain and ceramic tile in foyer, bathrooms & laundry room
- High density upgraded under pad with superior grade carpets in master bedroom, secondary bedrooms
- This home includes a high efficiency furnace, ERV system and air conditioning. It is built to Energy Star standards (20% more efficient than a new Ontario Building Code built home.)
- Quality craftsmanship built by Legendary Lucchetta



ALL DRAWINGS ARE ARTIST'S CONCEPTS AND MAY VARY SLIGHTLY FROM THE FINAL PRODUCT. E. & D.E. ACTUAL USABLE FLOOR SPACE MAY VARY FROM THE STATED AREA AND DOES NOT INCLUDE BASEMENT AND GARAGE. DRAWINGS MAY SHOW OPTIONAL FEATURES WHICH MAY NOT BE INCLUDED IN THE BASE PRICE.