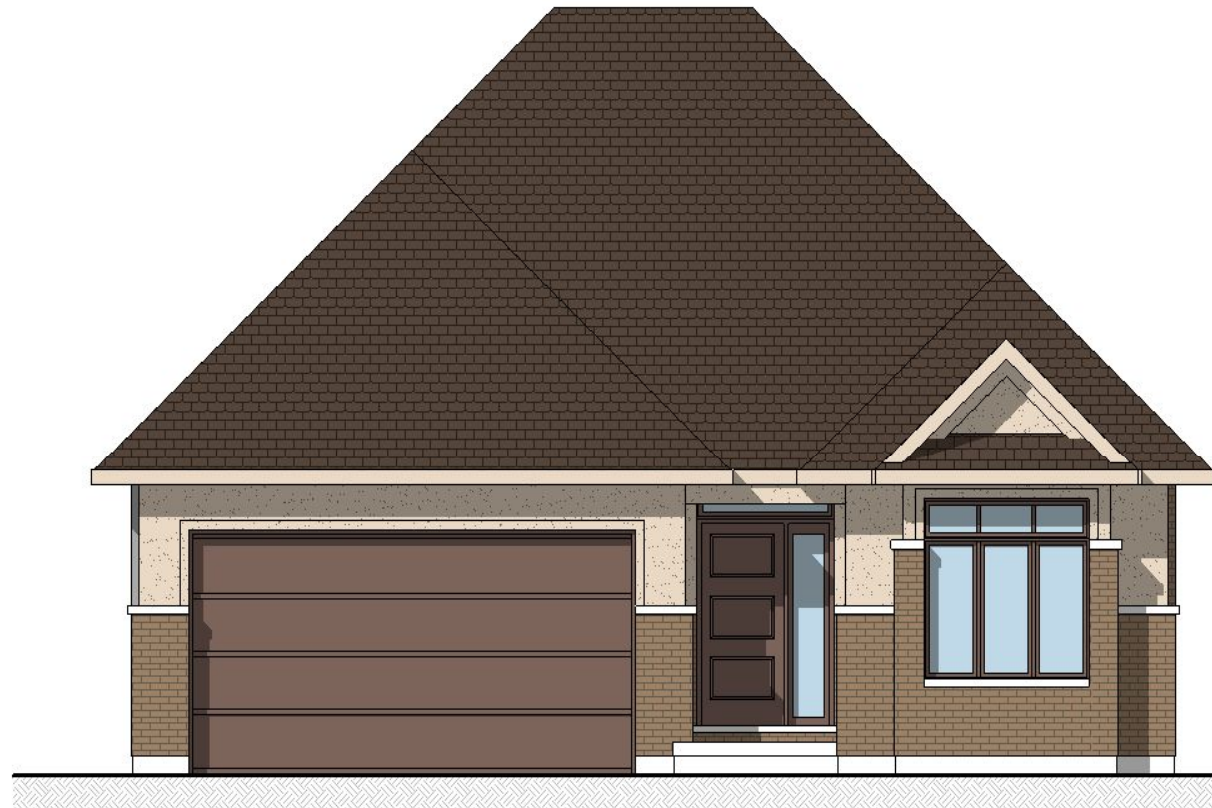


Lot 12- #464 Old Course Trail



Architecturally Inspired Front Facade

DUNDEE TRANSITIONAL

1563 SQ.FT | 2 BEDROOM(S) | 2 BATHROOM(S) | DOUBLE CAR GARAGE

Move In Ready Price - **SEE SALES FOR PRICE**

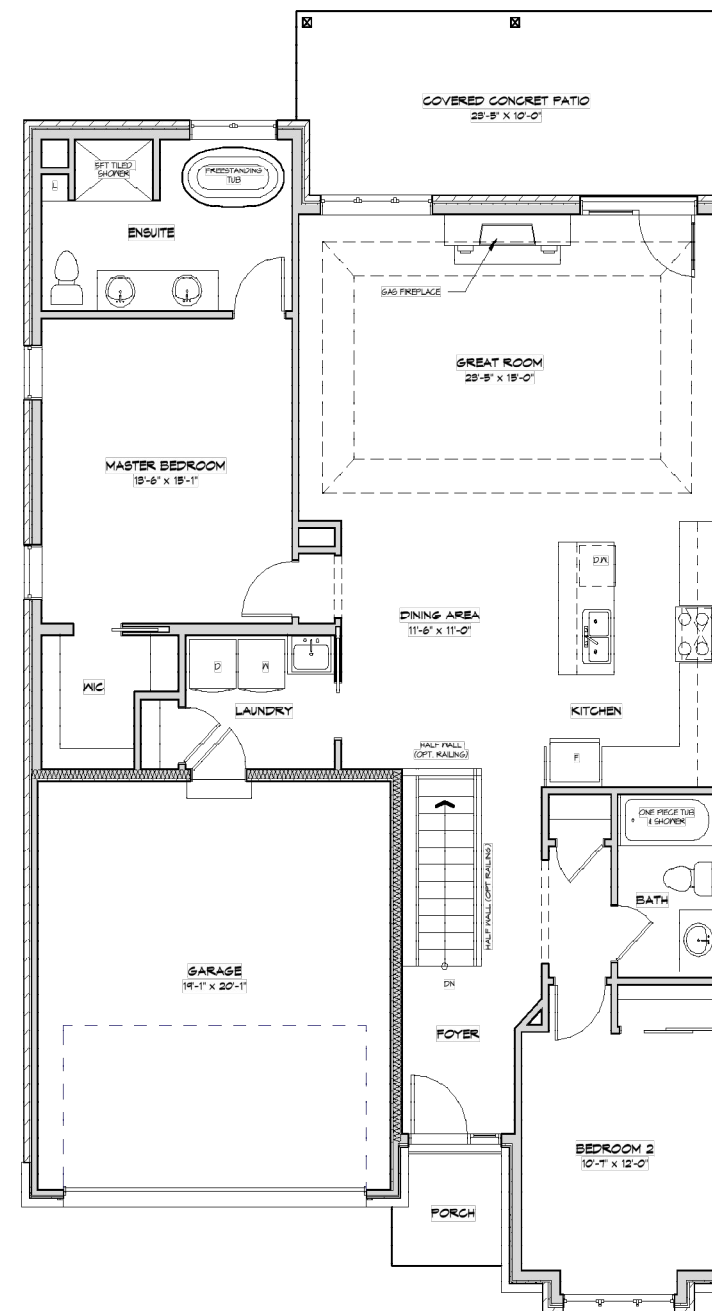
Association Fee: \$262/month (\$20 goes towards the reserve fund, and includes the use of all amenities: indoor salt water pool, state of the art fitness centre, tennis courts, change rooms, hot tub, sauna, games room, library, banquet centre, lawn care including grass cutting and trimming, driveway snow removal, walkway shoveling and monitored security system).

*PRICE SUBJECT TO CHANGE

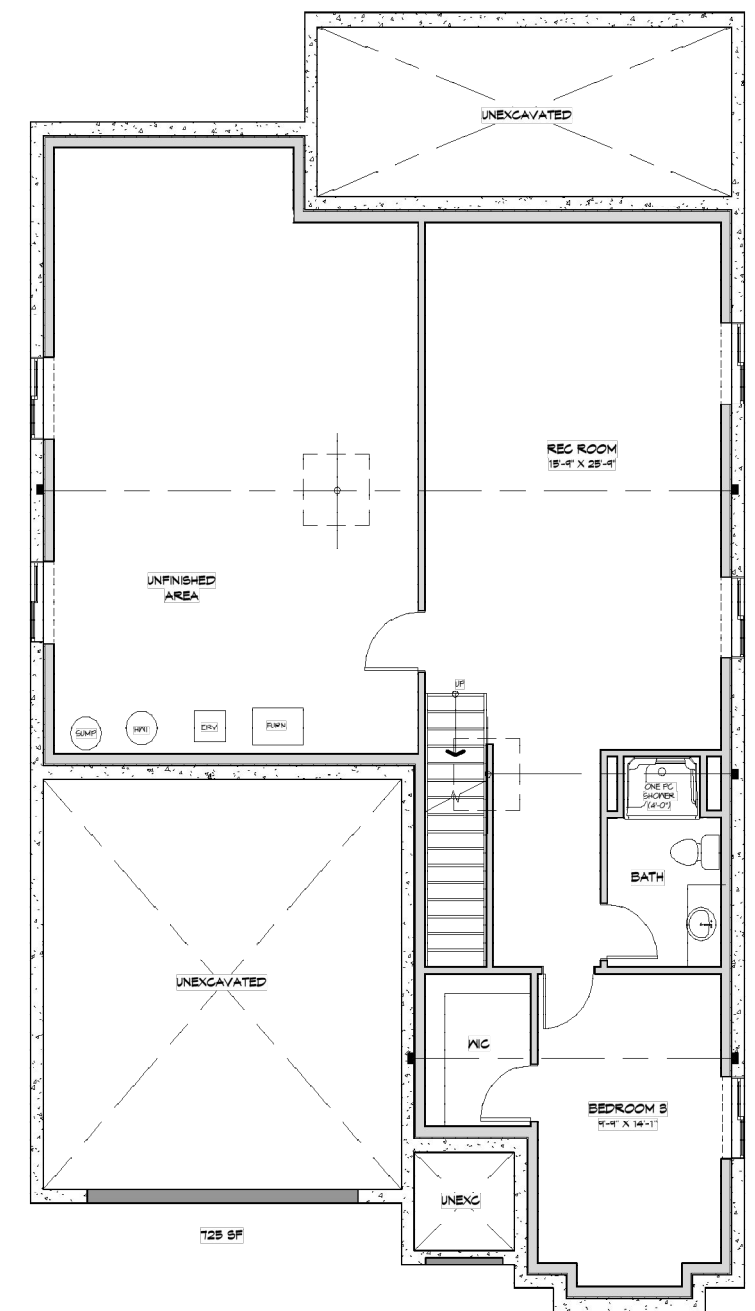
Key Features Included In This Home

- 9' Main Floor Ceilings
- 10.5' Tray Ceiling in the Great Room
- Enlarged Covered Patio

- Custom Tiled Shower in Ensuite
- Finished Basement
- Gas Fireplace in the Great Room



Main Floor

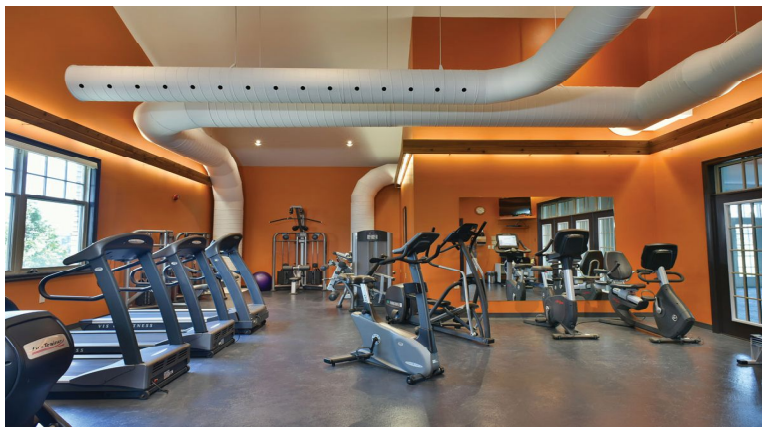


Basement

Amenities Included in the Association



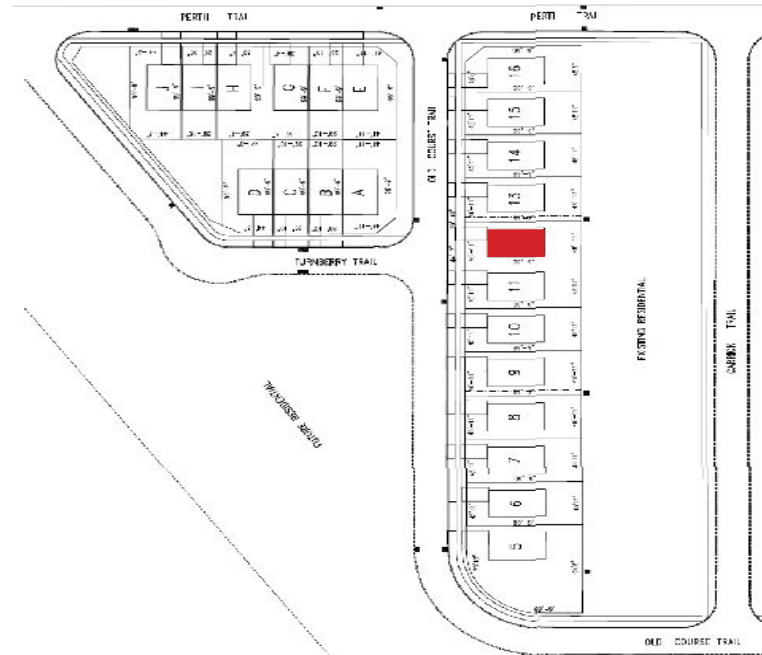
Access to the Hunter's Pointe Community Center



Use of the community gym



Take a dip in the pool or relax in the jacuzzi



Challenge your freinds over at the tennis courts

Designer Features Included:

- 1563 sq.ft open concept main floor
- 725 sq.ft finished basement with 3 piece bathroom
- Brick & stucco siding facade
- Complete landscape package including paved driveway & sprinkler system
- 23'-5" x 10' enlarged raised covered concrete patio
- Double car garage with direct entry into home
- 9 foot ceilings on the main floor
- 10.5 foot tray ceiling in the great room
- Gas fireplace in the great room
- Custom built cabinetry in kitchen and baths
- Quartz countertops in the kitchen & ensuite
- Spacious walk-in closet with custom organizers in the master bedroom
- Custom tiled shower in ensuite bath
- Over sized procelain and ceramic tile in kitchen, bathrooms & laundry room
- High density upgraded under pad with superior grade carpets in the basement
- This home includes a high efficiency furnace, ERV system and air conditioning. It is built to Energy Star standards (20% more efficient than a new Ontario Building Code built home.)
- Quality craftsmanship built by Legendary Lucchetta