

Lot #7- Unit #13 at 24 Grapeview Drive



Architecturally Inspired Front Facade

**THE MODENA**

2252 SQ.FT | 3 BEDROOM(S) | 2+1 BATHROOM(S) | 1 1/2 CAR GARAGE

Move In Ready Price - **SEE SALES FOR PRICE**

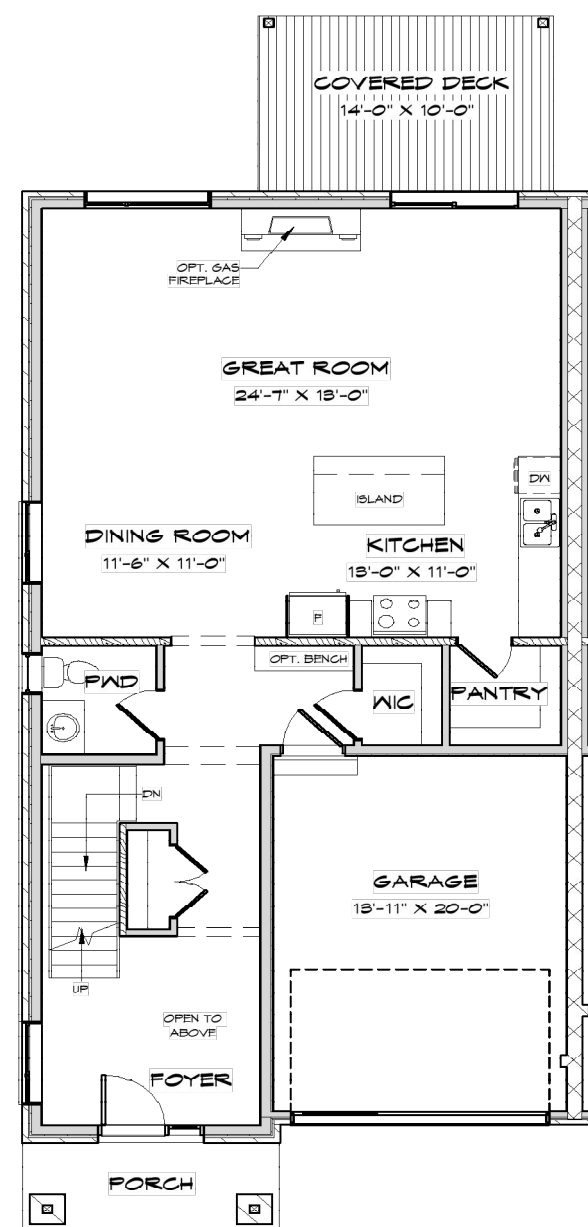
Condominium Fee: \$215/month (Approx.) Includes water, snow removal from roadway, driveway & sidewalks, grass cutting & maintenance of common areas.

\*PRICE SUBJECT TO CHANGE

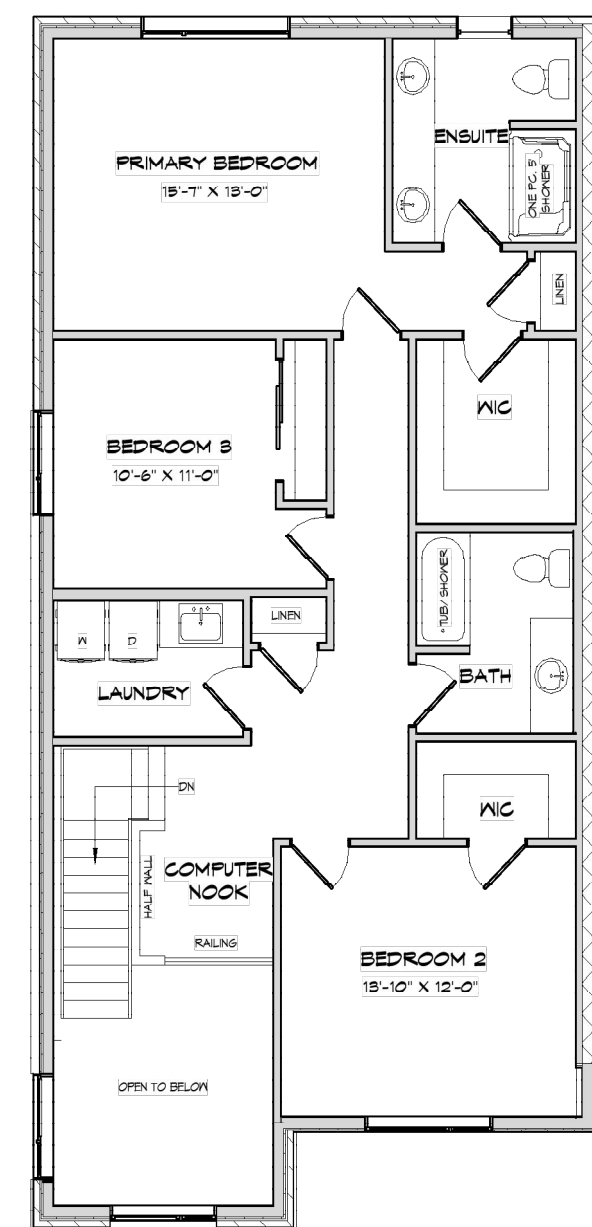
**Key Features Included In This Home**

- 9' Main Floor Ceilings
- 9' Second Floor Ceilings
- End Unit

- Quartz Countertops Throught
- Covered Rear Porch
- Designer Accents



Main Floor



Second Floor

## Finishes Included in this Home



### Design Features Included:

- 2252 sq.ft end unit
- Brick, cement board, stone & stucco contemporary facade
- Complete landscape package including paved driveway & sprinkler system
- 14' x 10' covered pressure treated deck
- 1 1/2 car garage with direct entry into home
- 9 foot ceilings on the main floor & second floor
- Custom built cabinetry in kitchen and baths, walk-in pantry
- Quartz countertops in the kitchen, ensuite, bath(s) & laundry room
- Gas line to BBQ
- Procelain and ceramic tile in foyer, kitchen, dining room, bathrooms & laundry room
- High density upgraded under pad with superior grade carpets in master bedroom, secondary bedrooms, upstairs hallway, & computer nook
- This home includes a high efficiency furnace, ERV system and air conditioning. It is built to Energy Star standards (20% more efficient than a new Ontario Building Code built home.)
- Quality craftsmanship built by Legendary Lucchetta



\*Colours and textures of the final product may appear different in photos above.