

Lot #15- Unit #6 at 24 Grapeview Drive



Architecturally Inspired Front Facade

THE BERNINA

1981 sq.ft | 3 BEDROOM(S) | 3 BATHROOM(S) | SINGLE & HALF CAR GARAGE

Move In Ready Price - ***SEE SALES REP FOR PRICE**

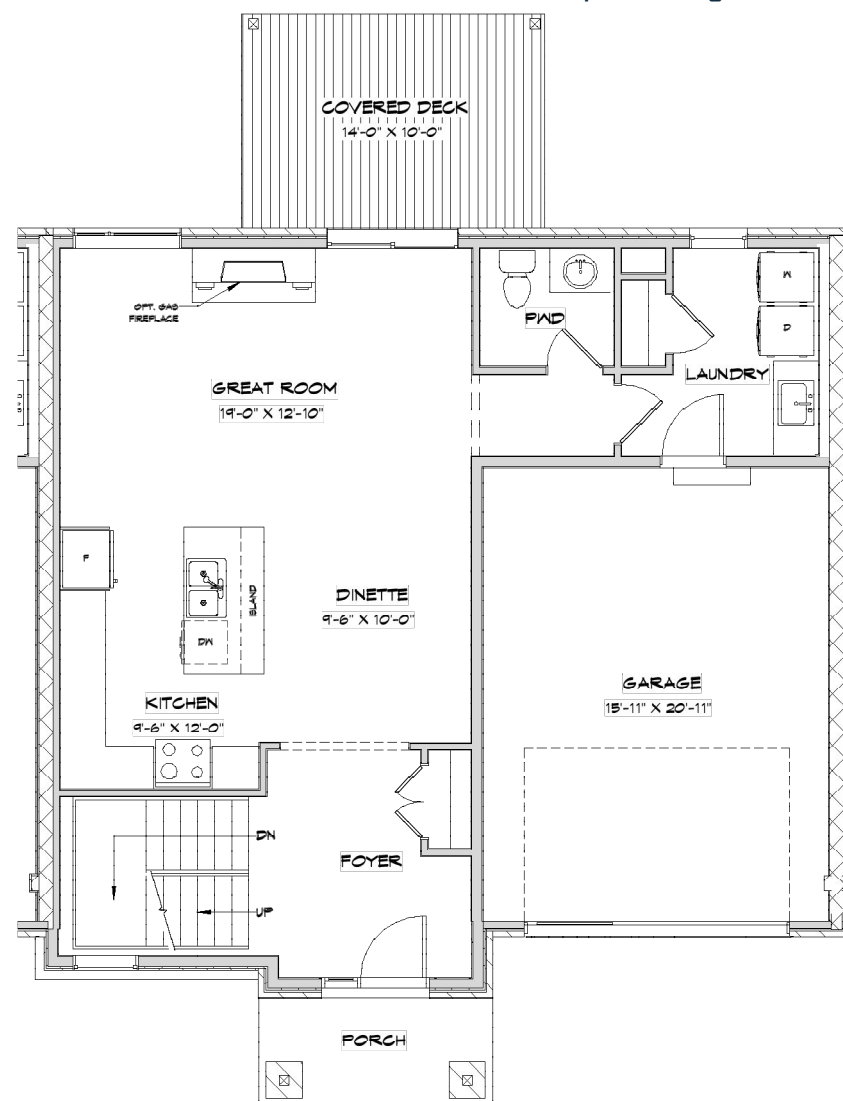
Condominium Fee: See sales rep for fee

*Price subject to change

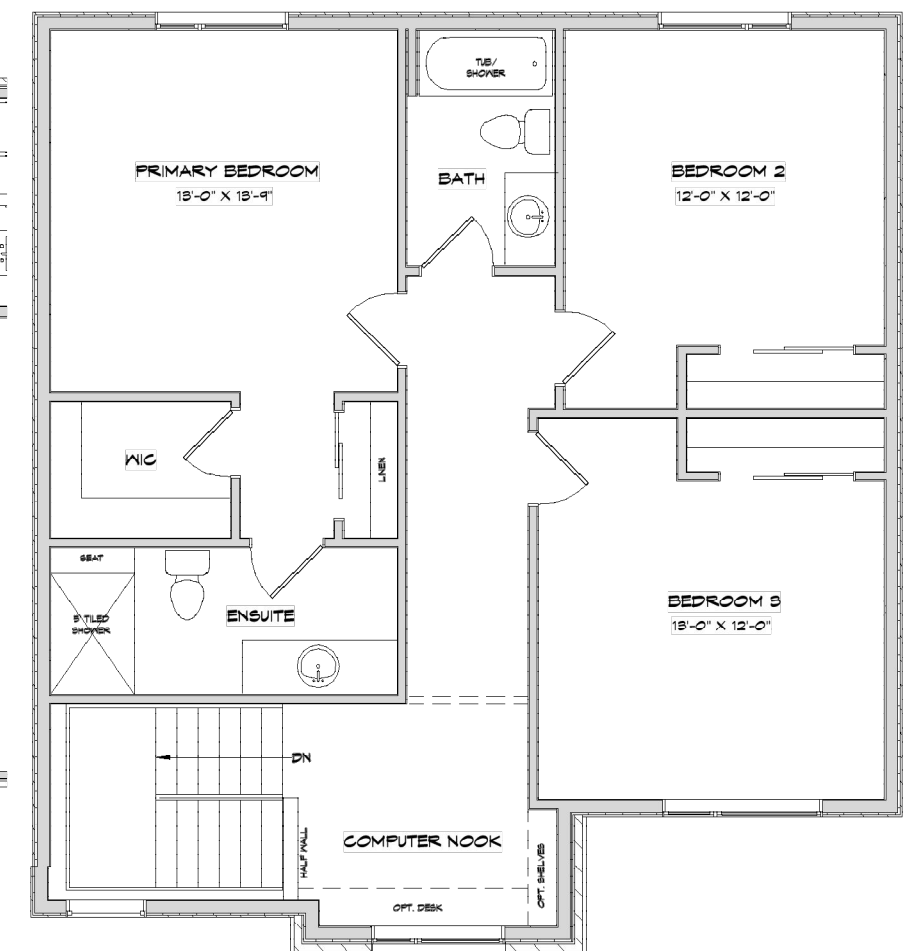
Key Features Included In This Home

- 9' Main Floor Ceilings
- 9' Second Floor Ceilings
- Quartz Countertops Throughout

- Custom Tiled Shower
- Engineered Hardwood Flooring
- Gas Fireplace in the Great Room



Main Floor



Second Floor

Amenities Close By

LUSSO

urban towns
BY LUCCHETTA

- Toronto is one hour down the QEW.
- 55 minutes to Buffalo International Airport.
- Tastings at dozens of local wineries.
- Attractions at Niagara Falls are 15 minutes away.
- Enjoy an array of challenging golf courses.
- Roam our luscious parks.

Everything you and your family will ever need is right here, right at your doorstep. Enjoy!

LUSSO is centrally located to all amenities found in and around St. Catharines and the Niagara Region. Schools, stores, health care, recreation, wineries, restaurants, banks and entertainment are all a ten minute drive or less from your door.

24 GRAPEVIEW DRIVE, ST. CATHARINES, ON

lucchetthomes.com/lusso

LUCCHETTA HOMES
Legendary Luxury

Design Features Included:

- 1981 sq.ft middle unit
- Brick, cement board, stone & stucco contemporary facade
- Complete landscape package including paved driveway & sprinkler system
- 14' x 10' covered pressure treated deck
- Single and a half garage with direct entry into home
- 9 foot ceilings on the main floor & second floor
- Custom built cabinetry in kitchen and baths
- Quartz countertops in the kitchen, ensuite, bath(s) & laundry
- Hardwood in the Great Room*
- Gas Fireplace in the Great Room*
- Upgraded tiled shower in the ensuite
- Over sized porcelain and ceramic tile in foyer, kitchen, laundry and bathrooms from builders standard samples
- High density upgraded under pad with superior grade carpets in all other rooms
- This home includes a high efficiency furnace, ERV system and air conditioning. It is built to Energy Star standards (20% more efficient than a new Ontario Building Code built home.)
- Energy Star rated home
- Quality craftsmanship built by Legendary Lucchetta

* Indicates an optional upgrade included in the purchase price

24/01/2024