

# ALGOMA II



## WATERCREST

AT HUNTERS POINTE



CONTEMPORARY



1,712  
sq.ft.



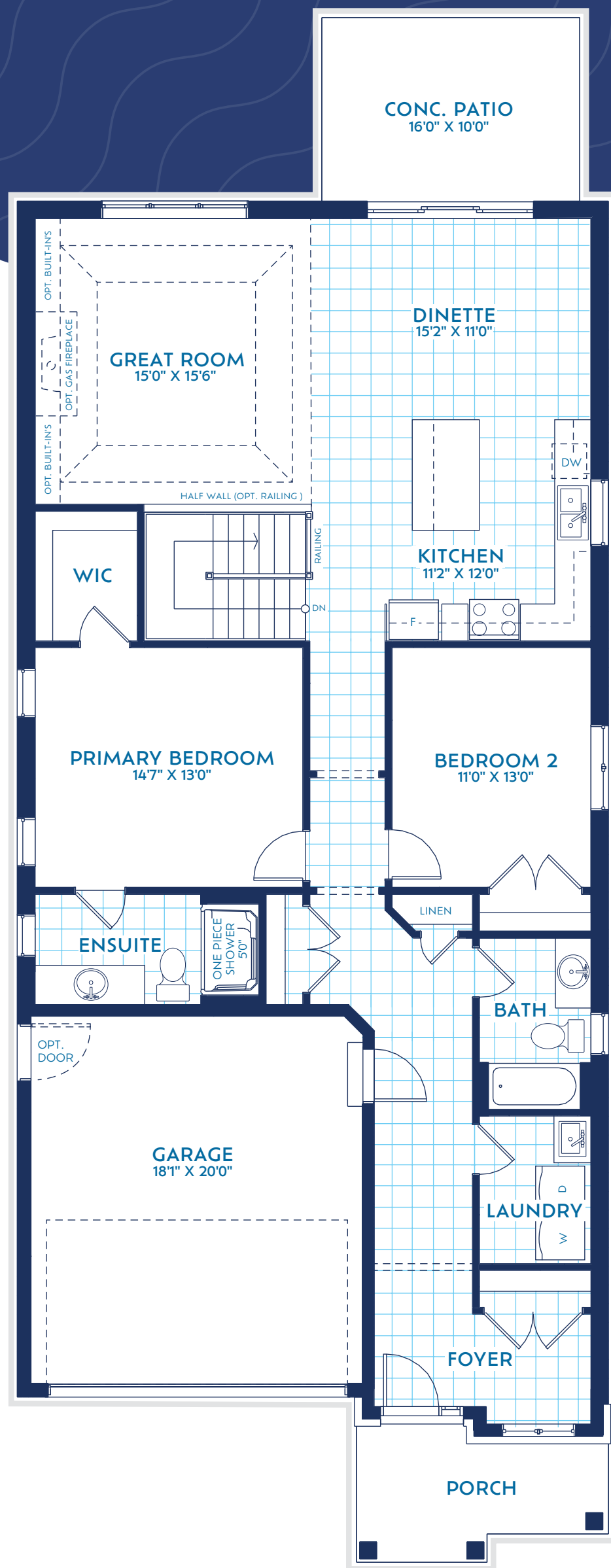
FARMHOUSE



TRANSITIONAL



# ALGOMA II



  
1,712  
sq.ft.

  [LucchettaHomes.com/watercrest](https://www.LucchettaHomes.com/watercrest)

All drawings are artist's concepts and may vary slightly from the final product. E.&O.E. Stone is optional as are some door glazing and profiles. Actual usable floor space may vary from the stated area and does not include the basement or garage. Drawings may show optional features which may not be included in the base price. Bulkheads and false walls maybe required as chases for plumbing and mechanical. Garage man door location (if applicable) may vary subject to grade. Please see our "Features and Finishes" handout for the "Residences of Hunters Pointe" for all changes that may have been incorporated into our home construction standards.

**LUCCHETTA  
HOMES**  
Legendary Luxury